

# MASTER KEYBOARD FATAR 610

<b>MIDI IN</b>	<b>ISIS MAESTRO MPU-401</b>	<b>1</b>
----------------	-----------------------------	----------

<b>MIDI OUT</b>	<b>TAHITI HEADER OUT</b>	<b>1</b>
	<b>TAHITI EXT. OUT</b>	<b>2</b>
	<b>TAHITI EXT. THRU</b>	<b>3</b>
	<b>ISIS MIDI Synthesizer Extended</b>	<b>4</b>

## MIDI OUT

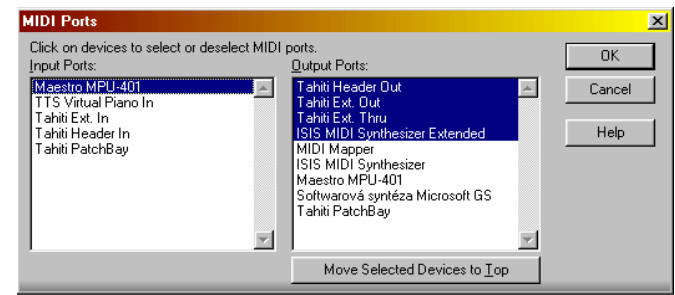
<b>KORG 05/RW</b>	MIDI	<b>CH=1</b>
	MIDI FILTER	PRG PRG
		AFT ENA
		CTRL ENA
		EX ENA
	PROTECT	PROGRAM OFF
		COMBINATION OFF
		PAGE MEMORY OFF

<b>LEXICON MPX 100</b>	MIDI CHANNEL	<b>CH=16</b>
------------------------	--------------	--------------

(SPLITTER)

<b>DIGITECH VHM5</b>	MIDI	<b>CH=15</b>
	ENABLE VOICE EDIT	YES
	TRANSMIT PROGRAM CONTROLER	NO
	RECEIVE PROGRAM CONTROLER	YES
	TRANSMIT KEY CHANGE	NO
	RECEIVE KEY CHANGE	YES
	KEY CHANGE	CHORDS
	MIDI KEY	IGNORE
	SPLIT	C10
	MIDI PROGRAM	1 = 1 ON VHM

<b>DIGITECH 2120</b>	MIDI CHANNEL	<b>CH=14</b>
----------------------	--------------	--------------



## MIDI THRU

<b>ROLAND MT-32</b>	MIDI	<b>CH=1</b>
	MASTER + SOUND GROUP	MASTER TUNE = 440Hz
	MASTER + SOUND	UNIT = 17
	MASTER + VOLUME	REVERB = 5

<b>KAWAI K4r</b>	RECEIVED MIDI	<b>CH=11</b>
	SYSTEM MIDI	SYS
	SYSTEM OMNI	OFF
	RCV PGM	NORM
	RCV PRS, BND, MOD	ON
	VOL	NORM
	HOLD	ON
	RCV VEL	ON
	RCV EXL	ON

<b>ALESIS D4</b>	MIDI	<b>CH=1</b>
	MIDI THRU	OFF
	PRG CHANGES	ON
	PRG CONTROLERS	ON
	PROGRAM TABLE	021=00
	SYSTEM BACKUP	ALL
	DRUM SET ROOT	036 / C1

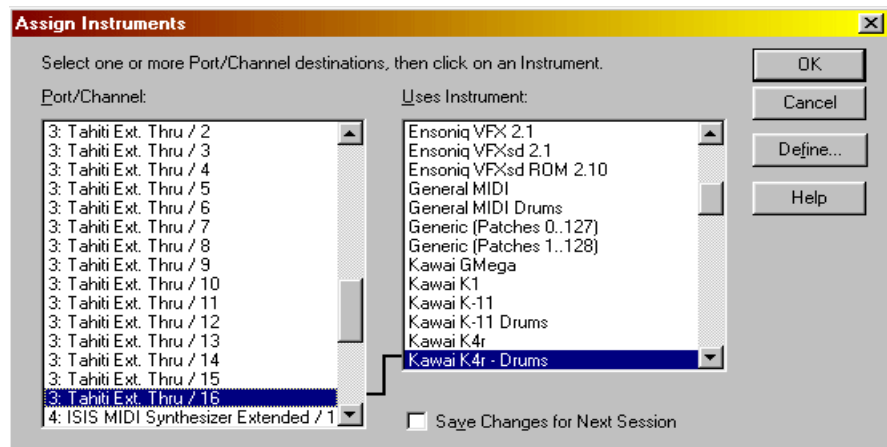
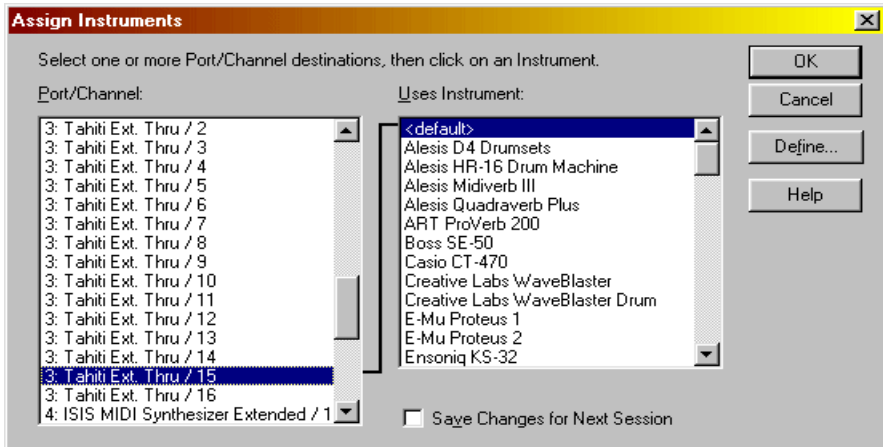
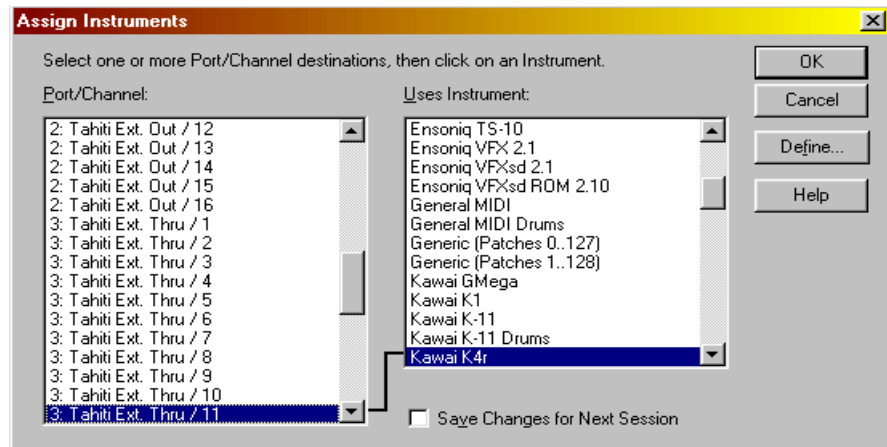
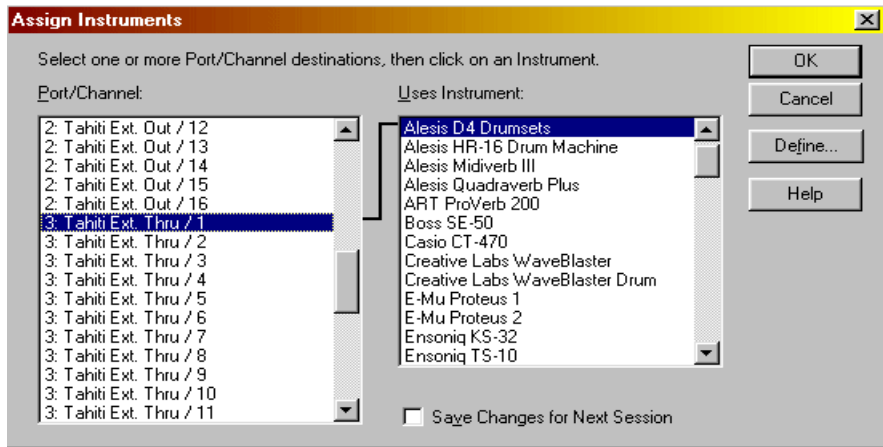
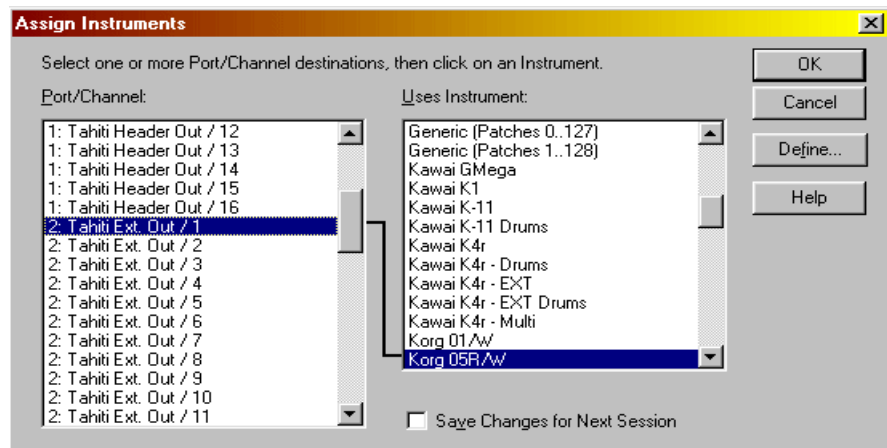
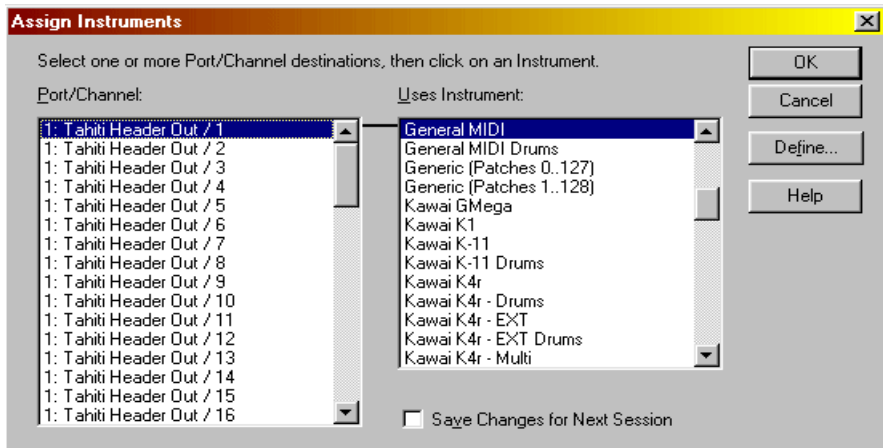
# Player

The screenshot shows the 'CONSOLE 8/4' software interface. At the top, there are 'Options' and 'About' menus. The interface is divided into several sections:

- INPUTS:** Features six input channels (1-6) and an S/PDIF input. Each channel has a 'MUTE' and 'SOLO' button, a vertical fader with a numerical value (80, 80, 85, 85, 86, 86), and an 'LED' indicator. Channel 7 is labeled 'S/PDIF' and has a 'MUTE' and 'SOLO' button.
- OUTPUTS:** Includes a 'BACKUP' section with two faders, and four main output channels (1-4) and a 'MIDI' section. Channels 1-4 have 'MUTE' and 'SOLO' buttons and faders with values 54, 54, 85, and 85. The 'MIDI' section has two faders with a value of 90.
- MONITORS:** Contains four monitor channels (1-4) with 'MUTE' and 'SOLO' buttons and faders with values 80, 50, 47, and 14. Channel 1 is labeled '1-2' and '3-4', channel 2 is '1-2' and '3-4', channel 3 is '1-2' and '3-4', and channel 4 is '1-2' and '3-4'. There are also 'MONO' and 'GROUP MODE' buttons.
- MASTER CLOCK:** A central section with a 'Guillemot' logo and a 'MASTER CLOCK' selector showing options: 32 kHz, 44 kHz (highlighted), 48 kHz, and S/PDIF.

The 'MAXI STUDIO ISIS' menu is displayed, listing the following options:

- Maxi Studio ISIS manual
- DVD-video playback help
- Configuration
- Console 8/4
- Soundbank Manager
- Instrument Manager
- Gamer FX
- Media Station
- ISIS Properties
- Audio Properties
- Volume Control
- Exit ISIS Manager
- About...



Recording

The screenshot displays the 'CONSOLE 8/4' software interface. At the top, there is a title bar with 'CONSOLE 8/4' and window control buttons. Below the title bar are 'Options' and 'About' menus. The interface is divided into three main sections: 'INPUTS', 'MONITORS', and 'OUTPUTS'.  
**INPUTS:** This section contains six input channels. Each channel has a 'MUTE' and 'SOLO' button above a vertical fader. Channel 1 has a value of 80, channel 2 has 80, channel 3 has 85, channel 4 has 85, channel 5 has 86, and channel 6 has 86. Below each fader are 'LED' and 'GANG' indicators. Channel 6 is labeled 'S/PDIF'.  
**MONITORS:** This section contains four monitor channels. Each channel has a 'MUTE' and 'SOLO' button above a vertical fader. Channel 1 has a value of 80, channel 2 has 50, channel 3 has 75, and channel 4 has 14. Below each fader are 'GANG' and 'MONO' indicators. A 'SOLO' button is located to the left of the monitor section. Above the monitors are 'S/PDIF' and 'CD/LINE/MIC' indicators.  
**OUTPUTS:** This section contains four output channels. The first channel is labeled 'BACKUP' and has a green level indicator. The second channel has a value of 55, the third has 55, and the fourth has 85. Below each fader are 'LED' and 'GANG' indicators. The final output is labeled 'MIDI L' and 'MIDI R' with a value of 92.  
**MASTER CLOCK:** Located in the center, it shows four options: '32 kHz', '44 kHz' (which is selected), '48 kHz', and 'S/PDIF'.  
**Guillemot Logo:** A red square with the Guillemot logo and the name 'Guillemot' is centered below the master clock.  
**MONO GROUP MODE:** A button at the bottom right of the interface.

